



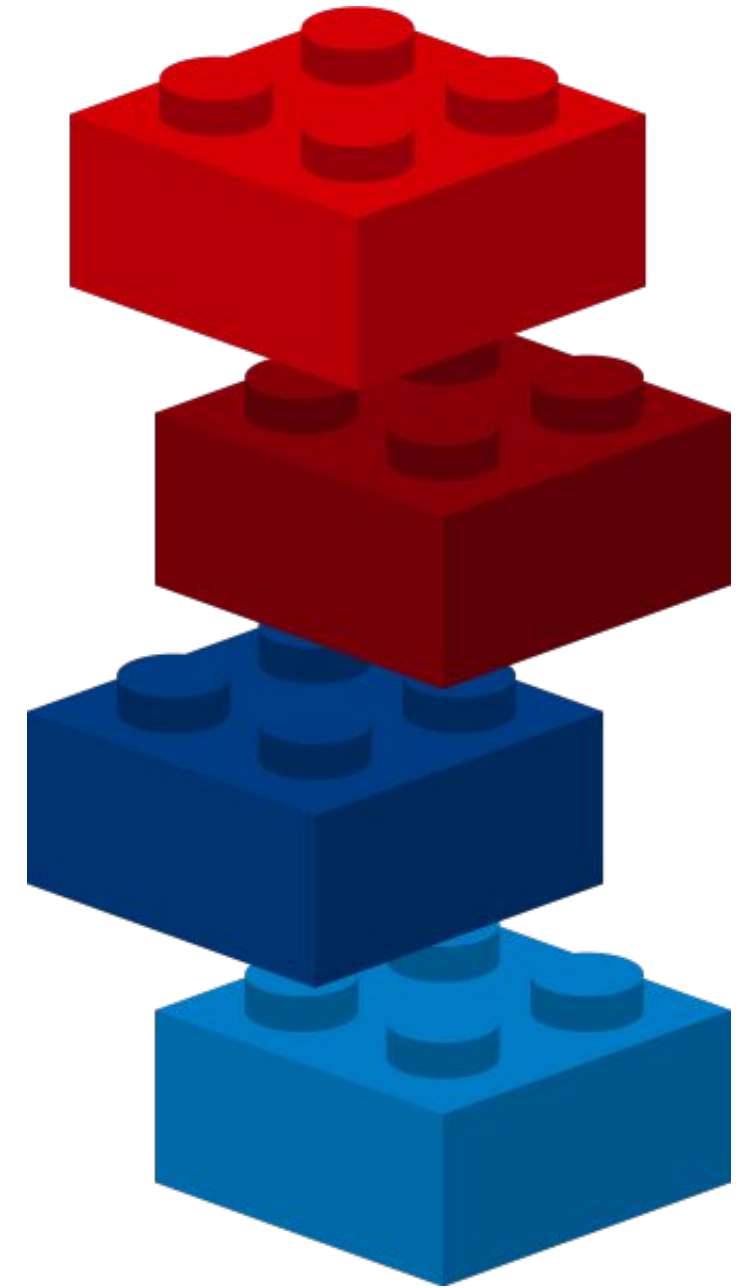
iDVR Introduction

Azure IoT PnP / iDVR Suite / iDVR AI Extension



Software Defined Device

- Azure IoT PnP Device
- iDVR Suite
- iDVR Suite / AI



iDVR - Azure IoT PnP

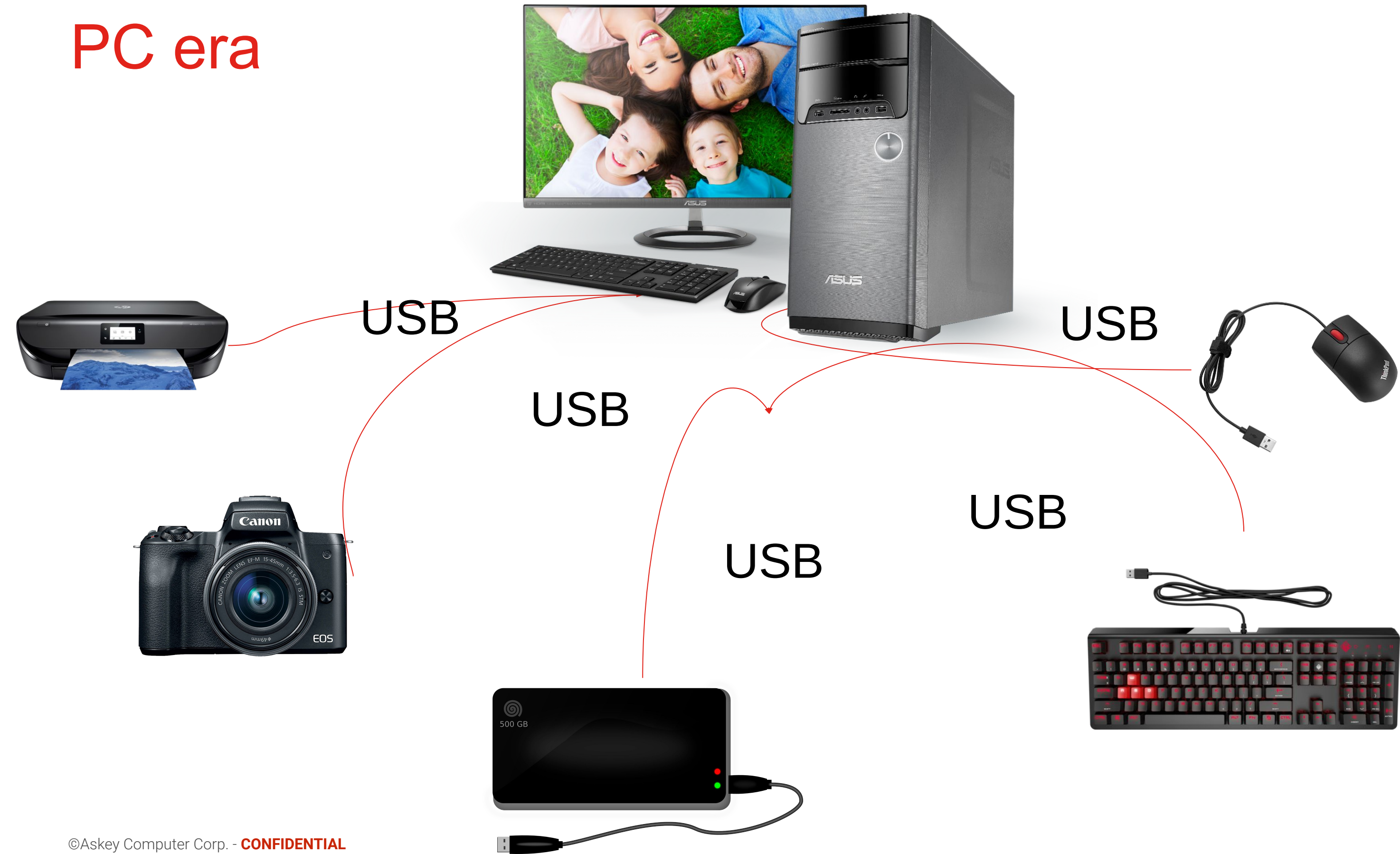
A network diagram illustrating the Internet of Things (IoT) concept. It features a central globe with a network of white lines and dots representing connected devices. Various icons are placed within hexagonal frames, connected to the network. These icons include a robotic arm, stacked cubes, a cloud with circuit lines, a smartphone with a signal wave, a power plug, a location pin, a server rack, a game controller, and a gear with a play button. The background is a dark blue gradient with a faint globe pattern.

IoT

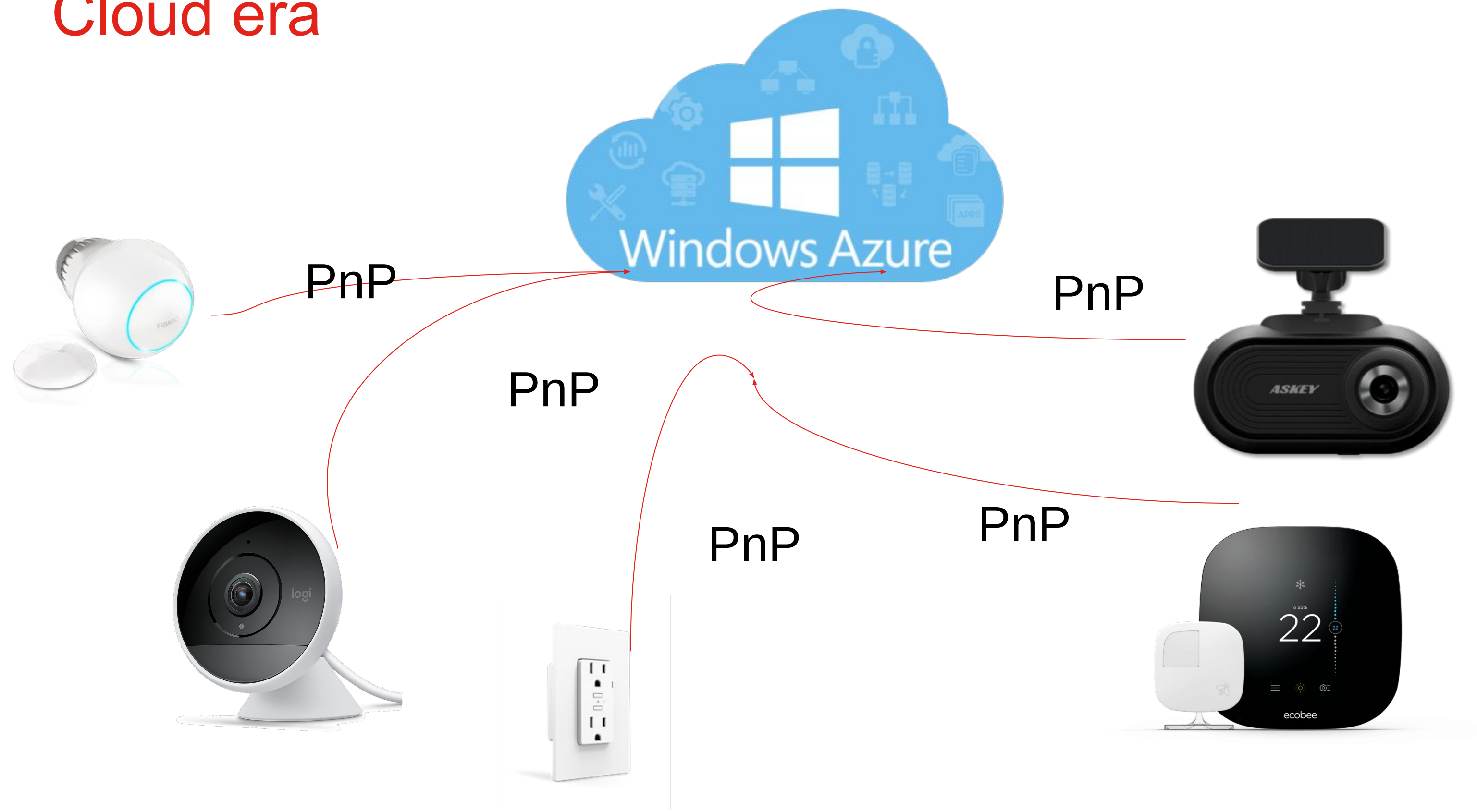
Azure IoT

PnP

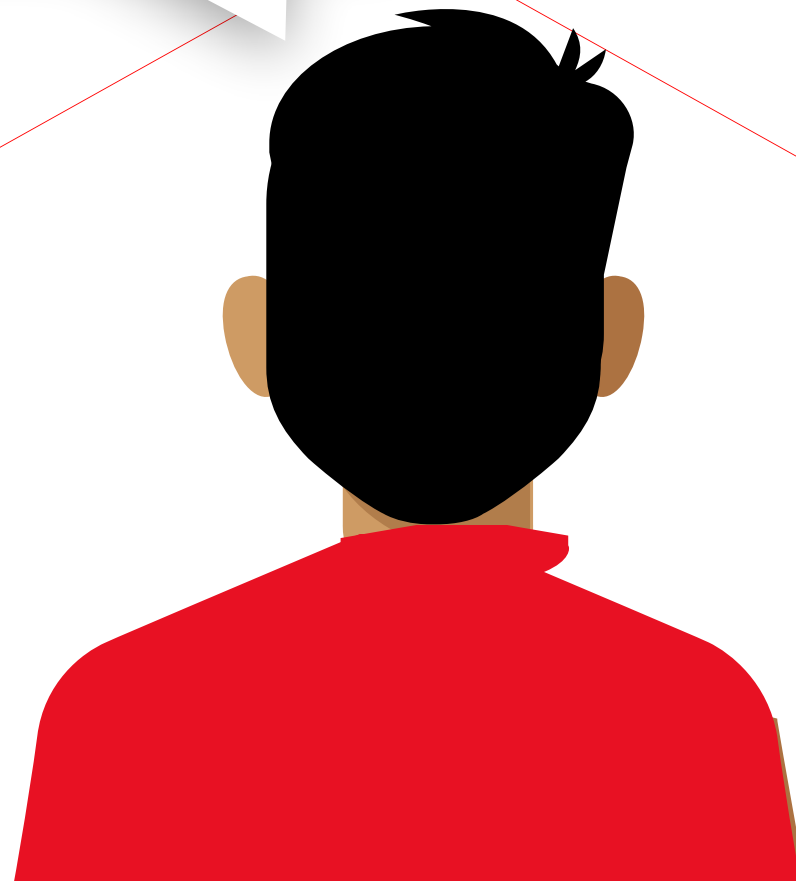
PC era



Cloud era



Let's see what devices
are available from
Azure IoT



Copy image from Microsoft

[◀ 返回](#)[回報不正確的裝置](#)[裝置規格](#)[開始使用](#)

ASKEY CDR8010

發行時間: 10/17/2019

[推文](#)[LinkedIn](#)[電子郵件](#)[Get device](#)

Pre-certified IoT Plug and Play [進一步了解](#)

To review device capabilities, [download the JSON file](#). To get firmware for the device, [visit the manufacturer's website](#).

摘要

Powered by Microsoft Azure IoT Plug and Play, Askey deepens its connection with the Azure ecosystem. With Microsoft Azure IoT Central and PnP Program, Askey ushers a new and intelligent channel for application/product development and management. System integrators and application developers can effortlessly and securely access Askey's PnP Certified CDR8010 Connect Car Cam+ to develop more applications. Microsoft Azure, with its diversified capabilities, not only ensures higher efficiency in product development and deployment, it is also the best platform for enhancing the end-to-end experiences in Askey's IoT implementation.

<https://catalog.azureiotsolutions.com/details?source=all-devices-page&deviceId=dccc1e7f-4c84-4dc7-a03d-8f496db8b5eb>

Benefits when iDVR equipped with PnP

- Let Askey PU focus on software development on the hardware side, and Askey Cloud team focus on Cloud application.
- Let other system integration developers develop their iDVR application.
- Other profit released by Azure

contact: Archer

iDVR Suite

Highlight for iDVR

**Device
Management**

FMS

IOT

Live View / Ecall



Highlight for iDVR

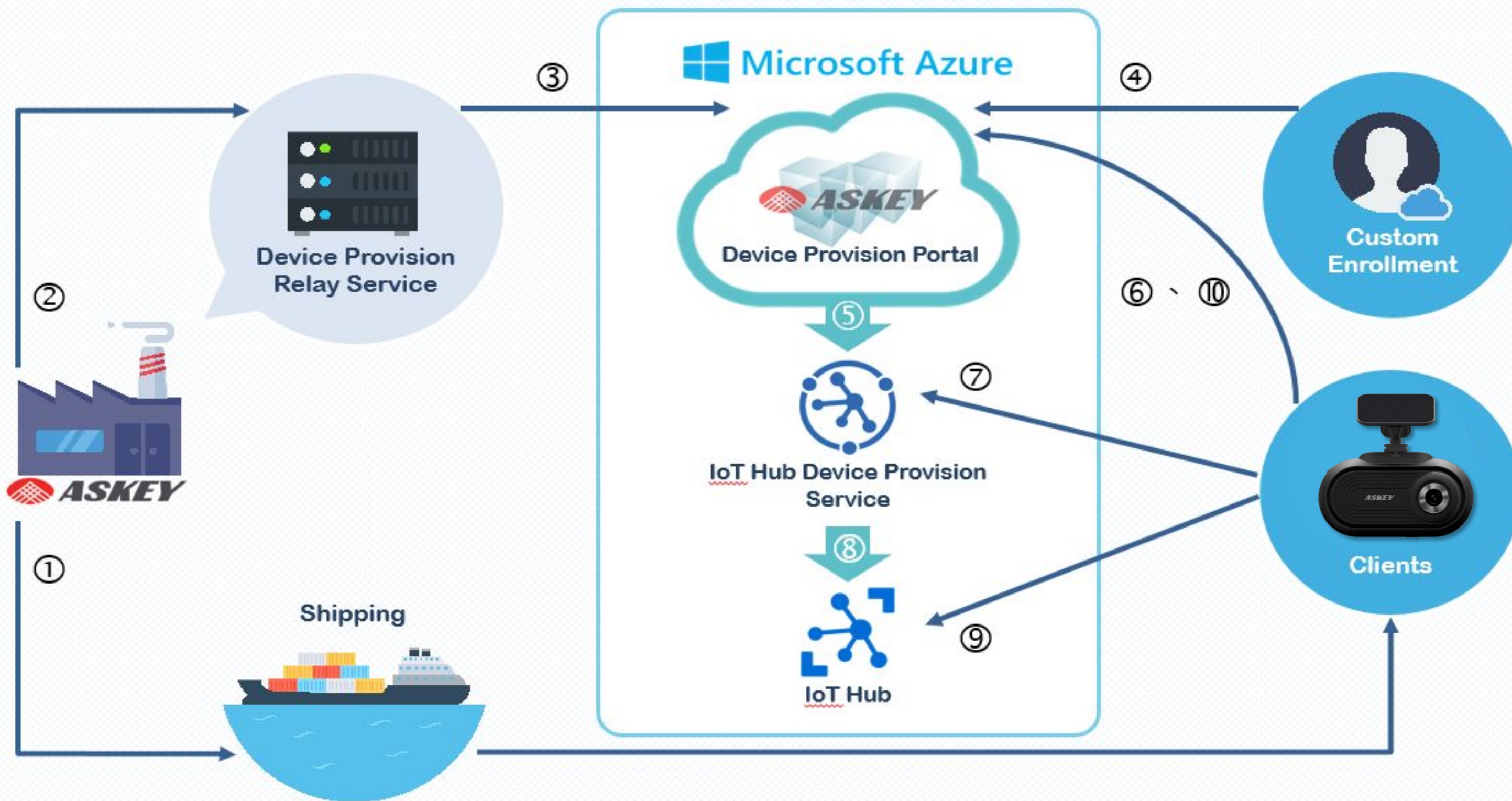
**Device
Management**

FMS

IOT

Live View / Ecall







Askey Internet of Things Introduction

Department: Cloud
Presenter : Summer Shia



Highlight for iDVR

**Device
Management**

FMS

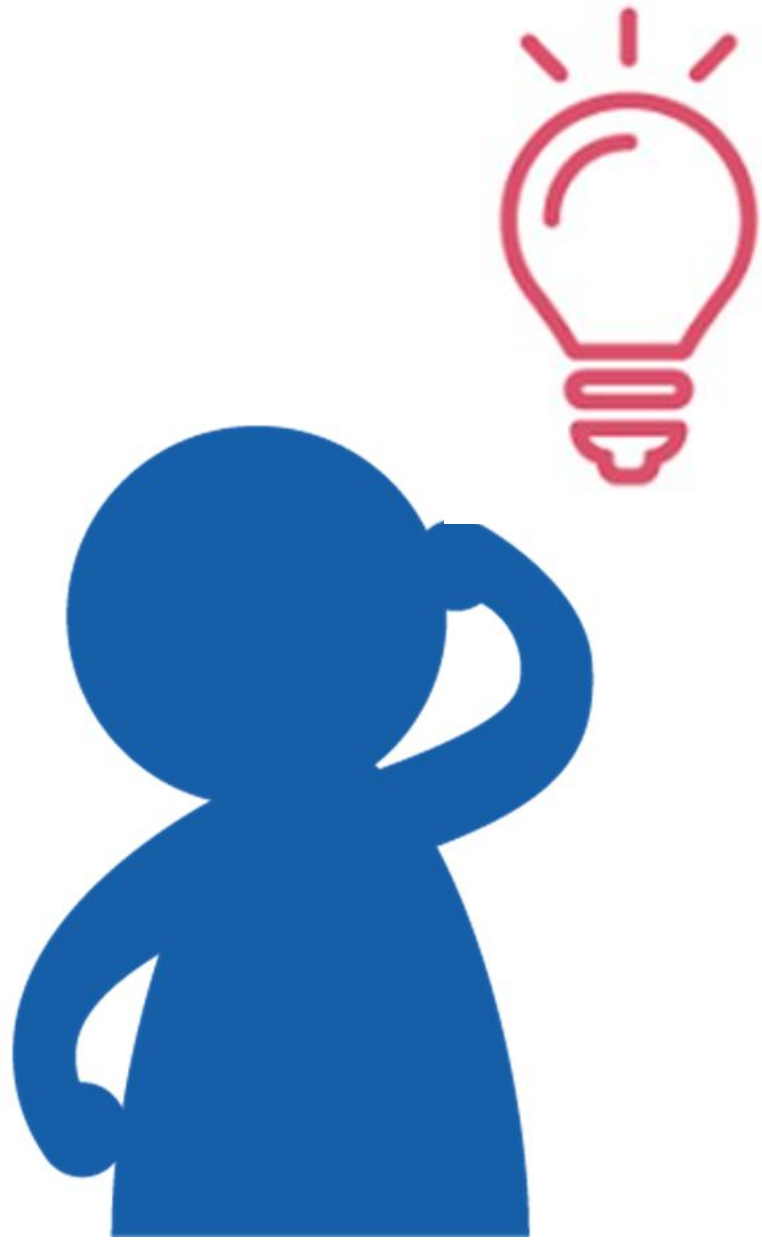
IOT

Live View / Ecall



Askey Internet of Things ?

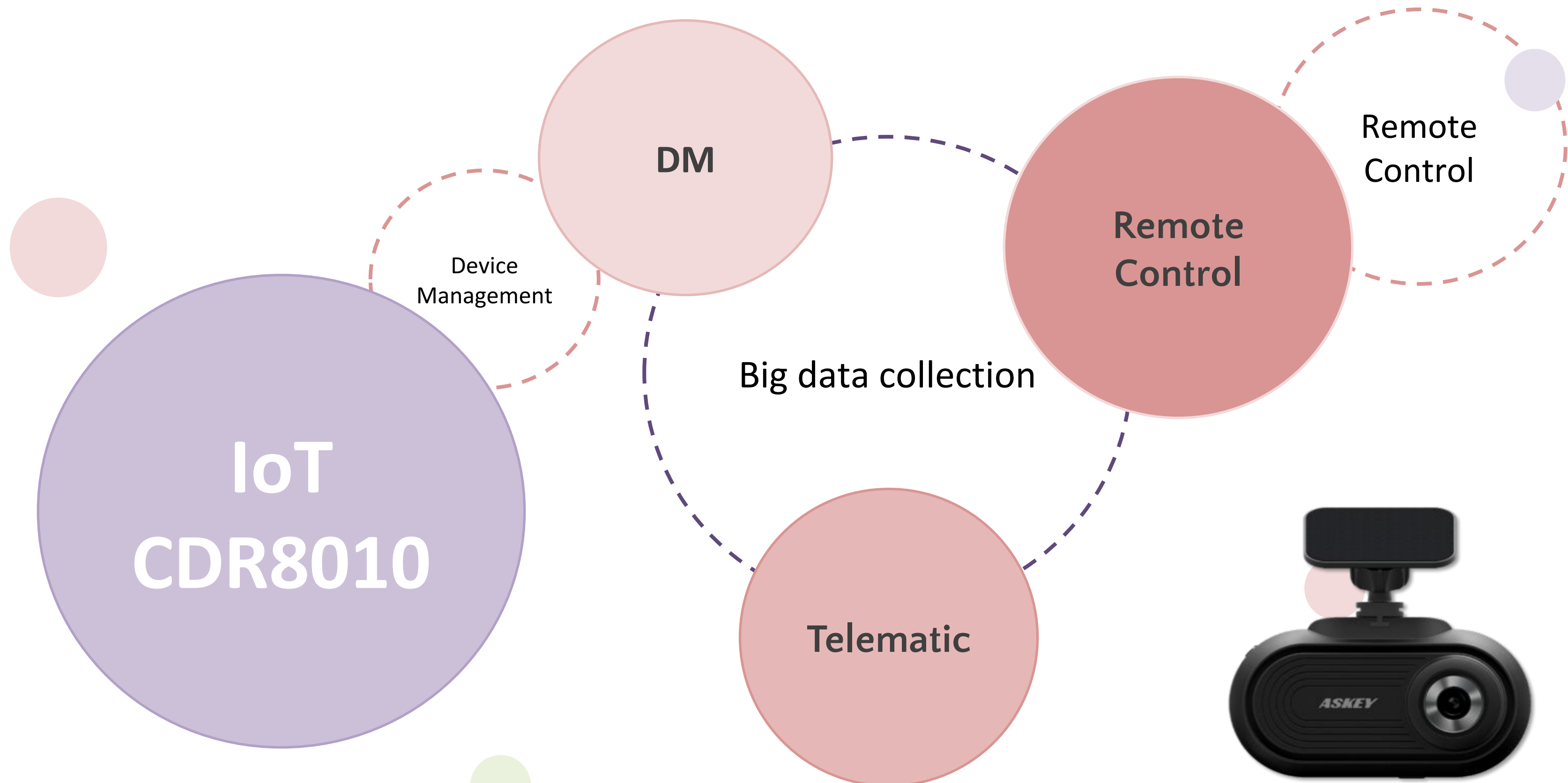




Askey Internet of Things

**Add value to your
product**

Askey-AIOT Application at CDR8010



iDVR suite IOT – Device Management

ASKEY

V 2.01

IOT

FMS

DCS

cloudtest

Device Management

DVR

6168

Last Refresh : 21 : 56

Group

Activation

DEVICE NAME	MODEL	IMEI	GROUP	LATEST UPDATA
CDR8010-357601090006168	CDR8010	357601090006168	cloudtest	--

ASKEY

V 2.01

IOT

FMS

DCS

cloudtest

Device Management > Group List > cloudtest

LIST

CONTROL

cloudtest

Edit

Delete Group

DEVICE NAME	IMEI	ADDED TO THE GROUP
allen-virtual-machine	415B4084099	2019-09-05
CDR8010_357601090007927	357601090007927	2019-12-12
CDR8010-357601090006168	357601090006168	2019-11-18

iDVR suite IOT – Remote Control

ASKEY

V 2.01

IOT

FMS

DCS

cloudtest

LIST

CONTROL

General Setting

Language Choose

Select

Connection Setting

Bluetooth

Wifi

Wifi AP

ADAS Setting

ADAS-FCW

ADAS-LDW

HorizontalLevel

59

HoodLevel

50

HorizontalPan

40

ADAS Car Type

truck

Others

Big Crash video upload

Audio Video-Video Duration

first 10s

5s later

Audio Video-Picture Quantity

4

Data Sampling Interval

5s

iDVR suite IOT – Device information

ASKEYV 2.01IOTFMSDCScloctest

Device Management > CDR8010_357601090007927

INFORMATIONHISTORYCONTROLALERT

INFORMATION

Device NameCDR8010_3576010...IMEI357601090007927

ModelCDR8010Device IDF76D3CDBF7CE35356C4D1ABDD914B20598BAB5A2

Activation2019-12-12Groupcloudtest

FW Version191030.0232

DEVICE STATUSGPS LOCATION

Longitude121.49Latitude25.00

Altitude43.77 mSpeed0.00 m/s

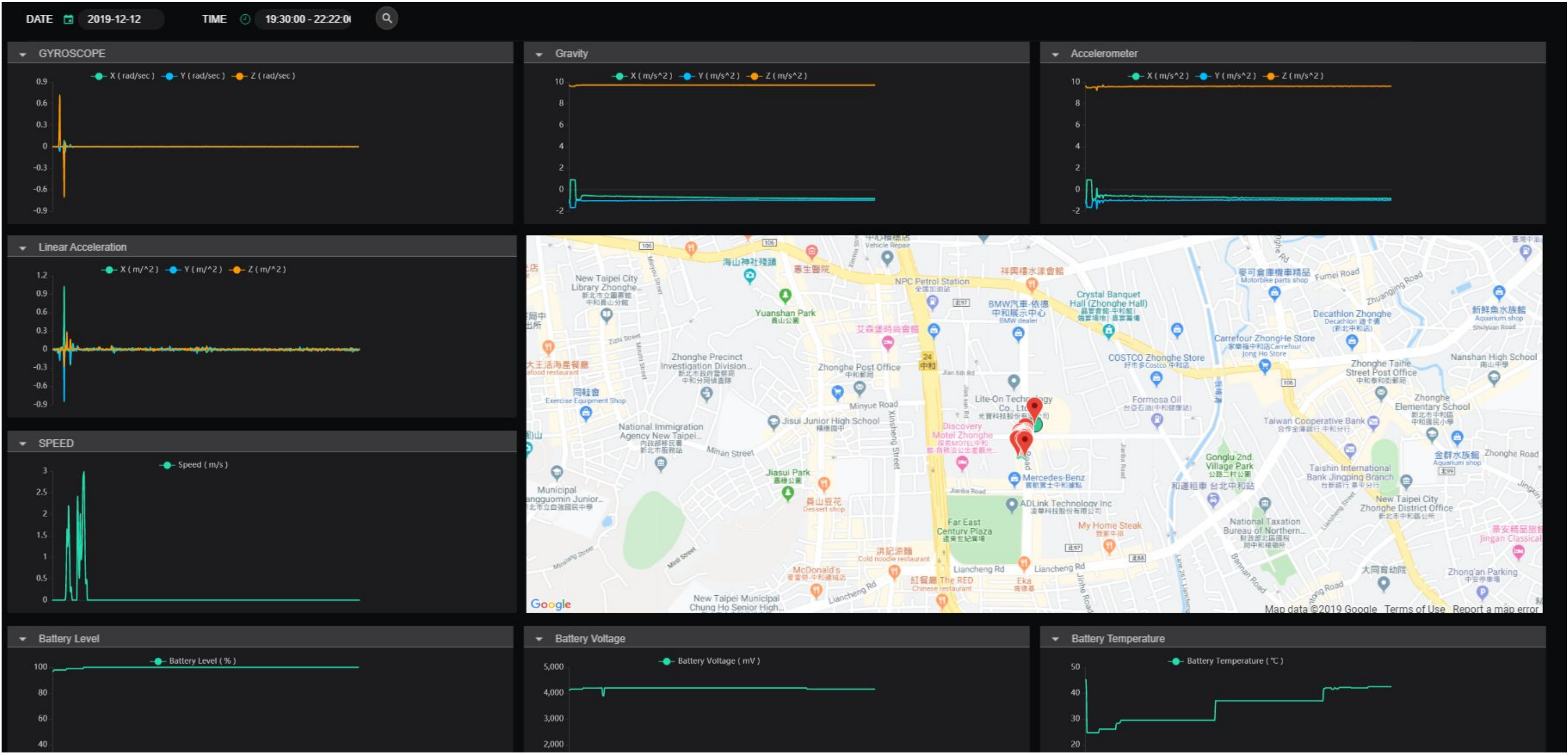
Satellites33 counts

(121.48804773 , 24.99968219)

INFORMATIONHISTORYCONTROLALERT				
START		2019-12-12		12:05
END		2019-12-12		22:05
	NAME	ALERT	DATE	TIME
▼	serious turn	1	2019-12-12	15:02:08
	serious turn		2019-12-12	15:02:08
▼	serious turn	1	2019-12-12	15:02:10
	serious turn		2019-12-12	15:02:10
▼	serious turn	1	2019-12-12	19:24:34
	serious turn		2019-12-12	19:24:34

©Askey Computer Corp. - **CONFIDENTIAL**

iDVR suite IOT – Telematic





Thank you
for your attention

Contact window for AIOT project
Summer Shia (Summer_shia@askey.com)





Askey Fleet Management Service Introduction

Department: Cloud
Presenter : Rocky Yang



Highlight for iDVR

**Device
Management**

FMS

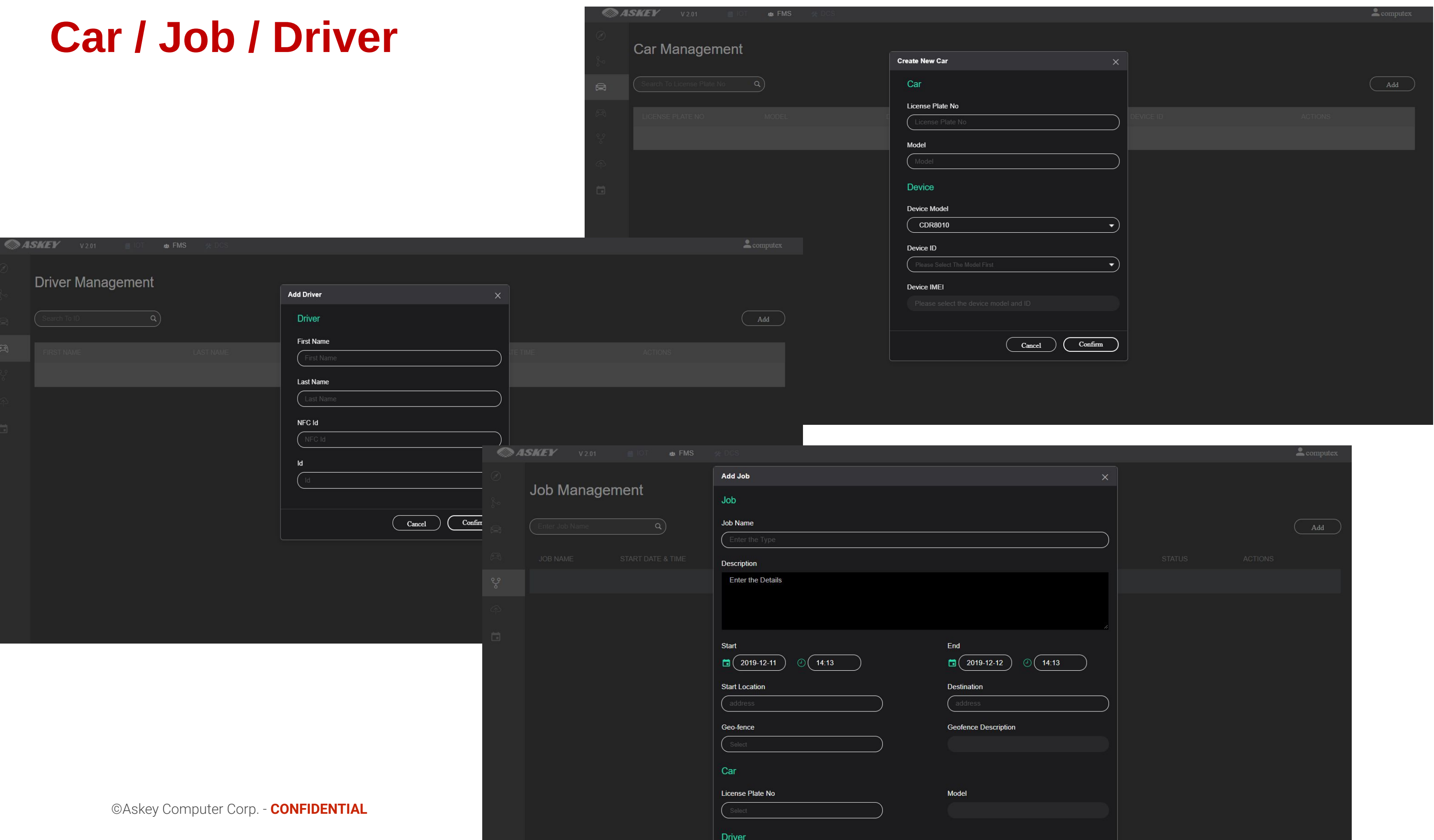
IOT

Live View / Ecall



- **Fleet Management**
 - **Car / Job / Driver**
 - **Message Management**
- **Cloud Instant Computing Platform**
 - **Geo-Fencing**
 - **Event Management**
 - **GPS Location**

Car / Job / Driver



Message Management

ASKEY

V 1.5

IOT

FMS

Twilio

cloudtest

START

2019-12-02

21:07

END

2019-12-11

21:07

Please Choose

Send Message

MESSAGE TYPE	TIME	SEND TO	MESSAGE DESCRIPTION	ACTIONS
TTS(Text)	2019-12-10	cloudtest	this	
TTS(Text)	2019-12-10	cloudtest	55	
TTS(Text)	2019-12-10	cloudtest	1234	
Audio	2019-12-10	cloudtest	hhhhcl	
TTS(Text)	2019-12-10	cloudtest	This is a test message.	
TTS(Text)	2019-12-10	testShadow	This is a test message to all devices.	

ASKEY

V 1.5

IOT

FMS

Twilio

cloudtest

START

2019-12-10

21:13

END

2019-12-11

21:13

Please Choose

Send Message

MESSAGE TYPE	TIME	SEND TO	MESSAGE DESCRIPTION	ACTIONS
--------------	------	---------	---------------------	---------

Send Message

Message Type

TTS(Text)

Message

TEST

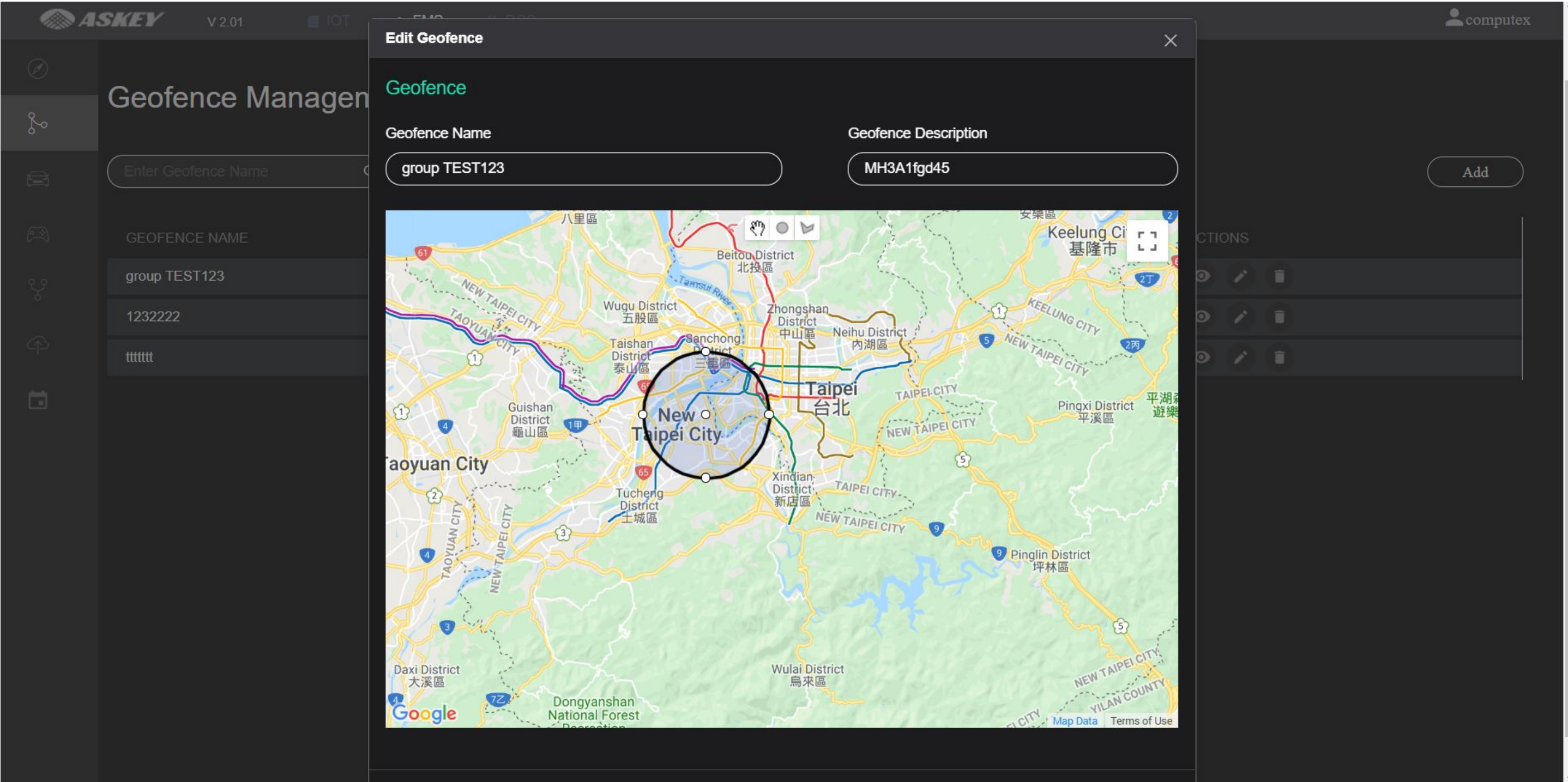
Select Group

jean_group

Cancel

Save

Geo-Fencing



Event Management

ASKEY

V 1.5

IOT

FMS

Twilio

cloudtest

Event Management

START

2019-11-20

21:08

END

2019-12-11

21:08

Event Settings

	EVENT	ALERT NAME	ALERT	DATE	TIME	DEVICE NAME
▼	GEO_FENCE_OUTSIDE_Event		1	2019-11-21	16:10:01	CDR8010-357601090006168
		GEO_FENCE_OUTSIDE		2019-11-21	16:10:01	
▶	GEO_FENCE_OUTSIDE_Event			2019-11-21	16:10:06	CDR8010-357601090006168
▶	GEO_FENCE_OUTSIDE_Event			2019-11-21	16:10:11	CDR8010-357601090006168
▶	GEO_FENCE_OUTSIDE_Event			2019-11-21	16:10:17	CDR8010-357601090006168
▶	GEO_FENCE_OUTSIDE_Event					
▶	GEO_FENCE_OUTSIDE_Event					
▶	GEO_FENCE_OUTSIDE_Event					
▶	GEO_FENCE_OUTSIDE_Event					
▶	GEO_FENCE_OUTSIDE_Event					
▶	GEO_FENCE_OUTSIDE_Event					

ASKEY

V 1.5

IOT

FMS

Twilio

cloudtest

Event Management > Event Settings

NAME	ALERT TYPE
222	ADAS_LDW
222e	minor crash
111	EVENT_MIDDLE_CRASH
ㅎㅎㅎㅎ	serious brake
4444444	ADAS_FCW
11111	serious brake
44	serious crash
55555	serious acceleration
cloudtest event	serious brake
4444	serious acceleration

Add Event Setting

Event Name

Please enter the event name

Alert Type

serious brake

Condition Type

many times in a period of time

Duration

Please enter the duration

Alert Counts

Please enter the number of prompts

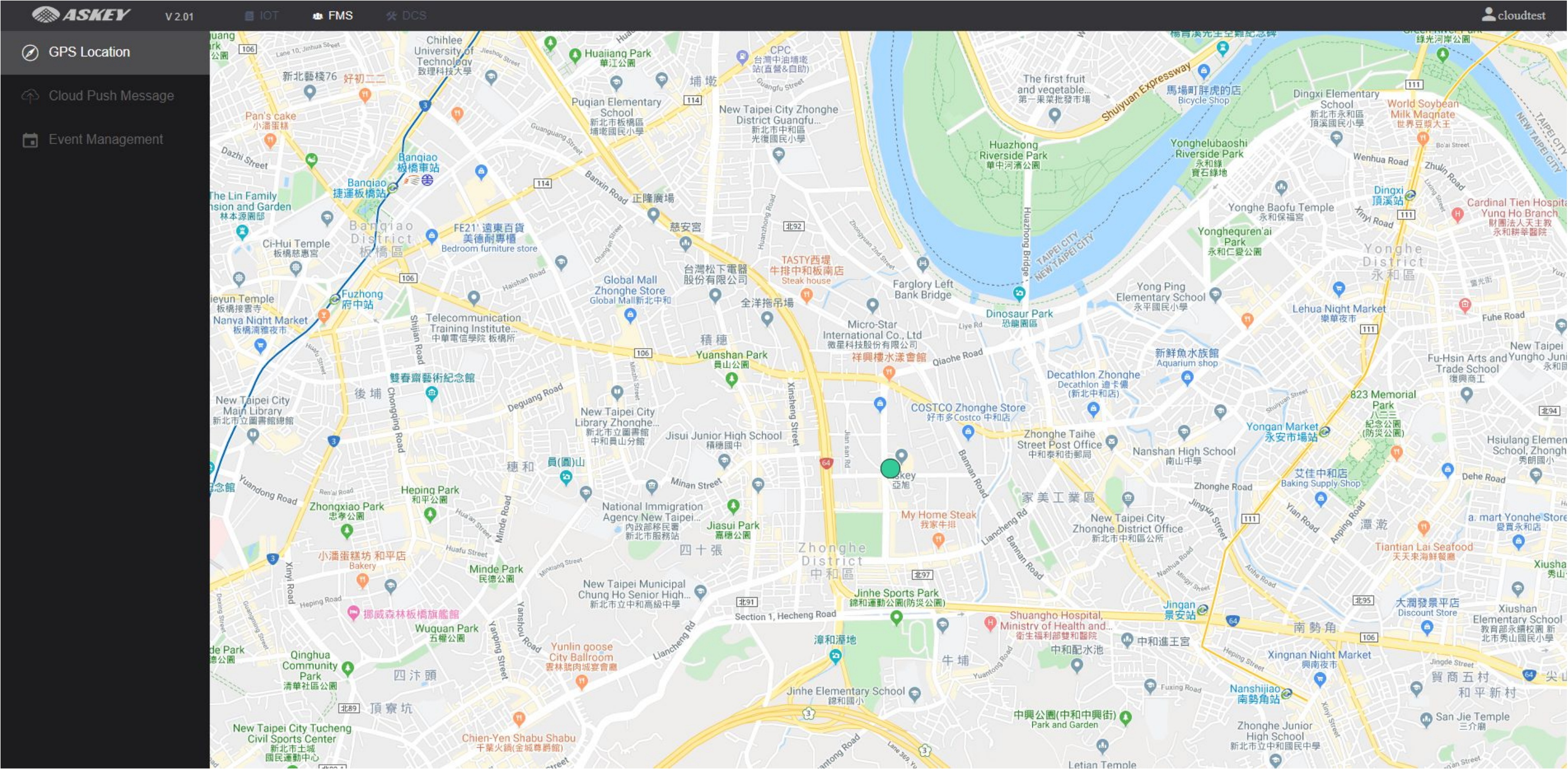
Cancel

Save

	ACTION
	<div></div> <div></div>
	<div></div> <div></div>
	<div></div> <div></div>
	<div></div> <div></div>
	<div></div> <div></div>
	<div></div> <div></div>
	<div></div> <div></div>
	<div></div> <div></div>
	<div></div> <div></div>

MORE

GPS Location





Thank you
for your attention

Contact window for AFMS project
Rocky Yang (rocky_yang@askey.com)





Askey Device Communication Service Introduction

Department: Cloud
Presenter : Blair Lin



Highlight for iDVR

**Device
Management**

FMS

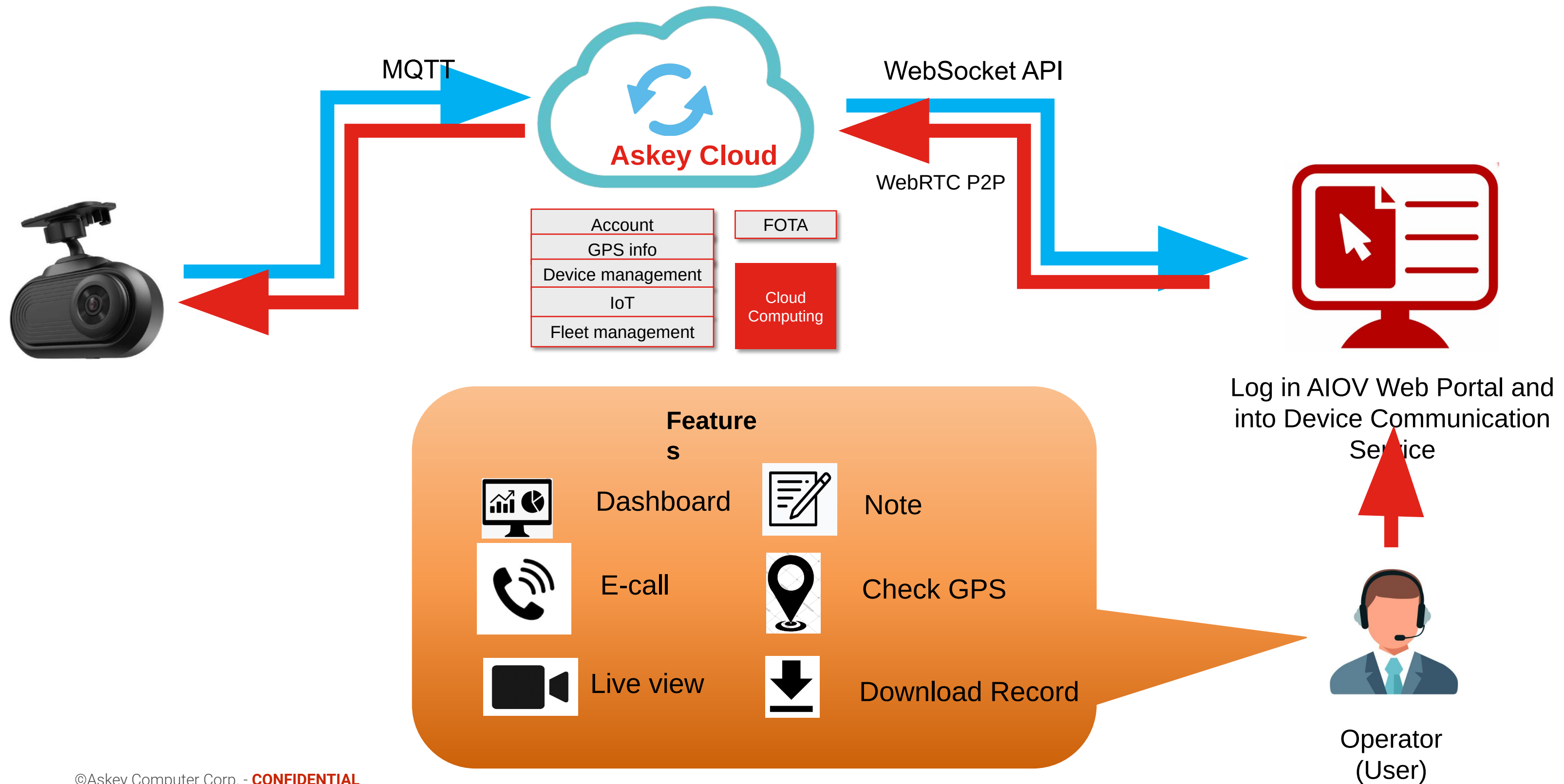
IOT

Live View / Ecall



- **Flow of Device Communication Service**
- **Web Portal for Device Communication Service**

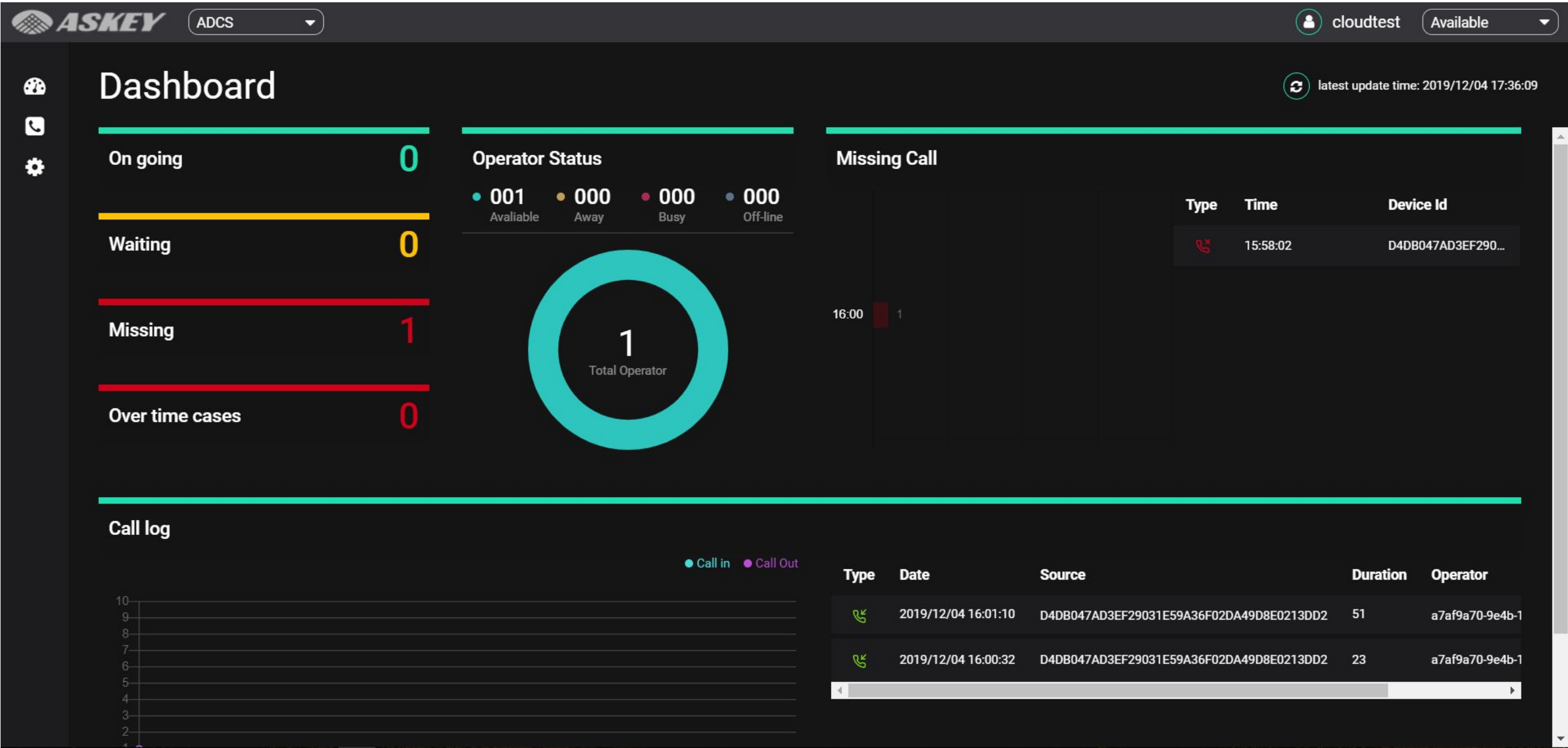
Flow of Device Communication Service



- **Flow of Device Communication Service**
- **Web Portal for Device Communication Service**

Web Portal for Device Communication Service

Dashboard



Web Portal for Device Communication Service

Processing

Processing case

Connect

Car Information

Driver name

—

License plate

Device Information

Device name

CDR8010-357601090006168

Model

CDR8010

IMEI

357601090006168

EventList

Event Name

Date

Time

NearMissEvent

2019/08/16

14:51:12

NearMissEvent

2019/08/16

15:21:44

NearMissEvent

2019/08/19

14:45:13

Notes

Input tags here

GPS Location

Live View

Latest record

Type

Time

Source

Duration

Media

Label

Action



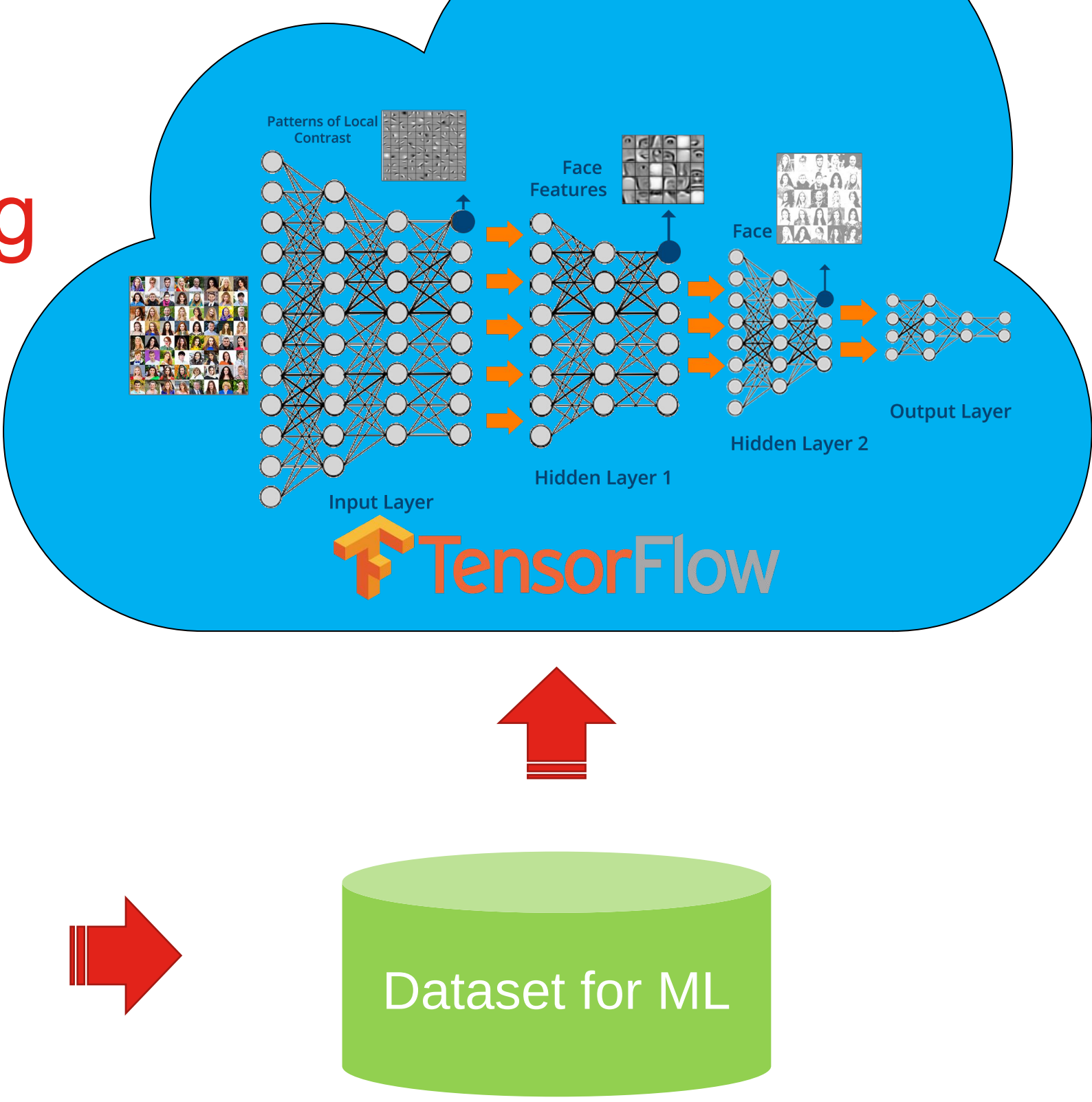
Thank you
for your attention

Contact window for ADCS project
Blair Lin (blair_lin@askey.com)

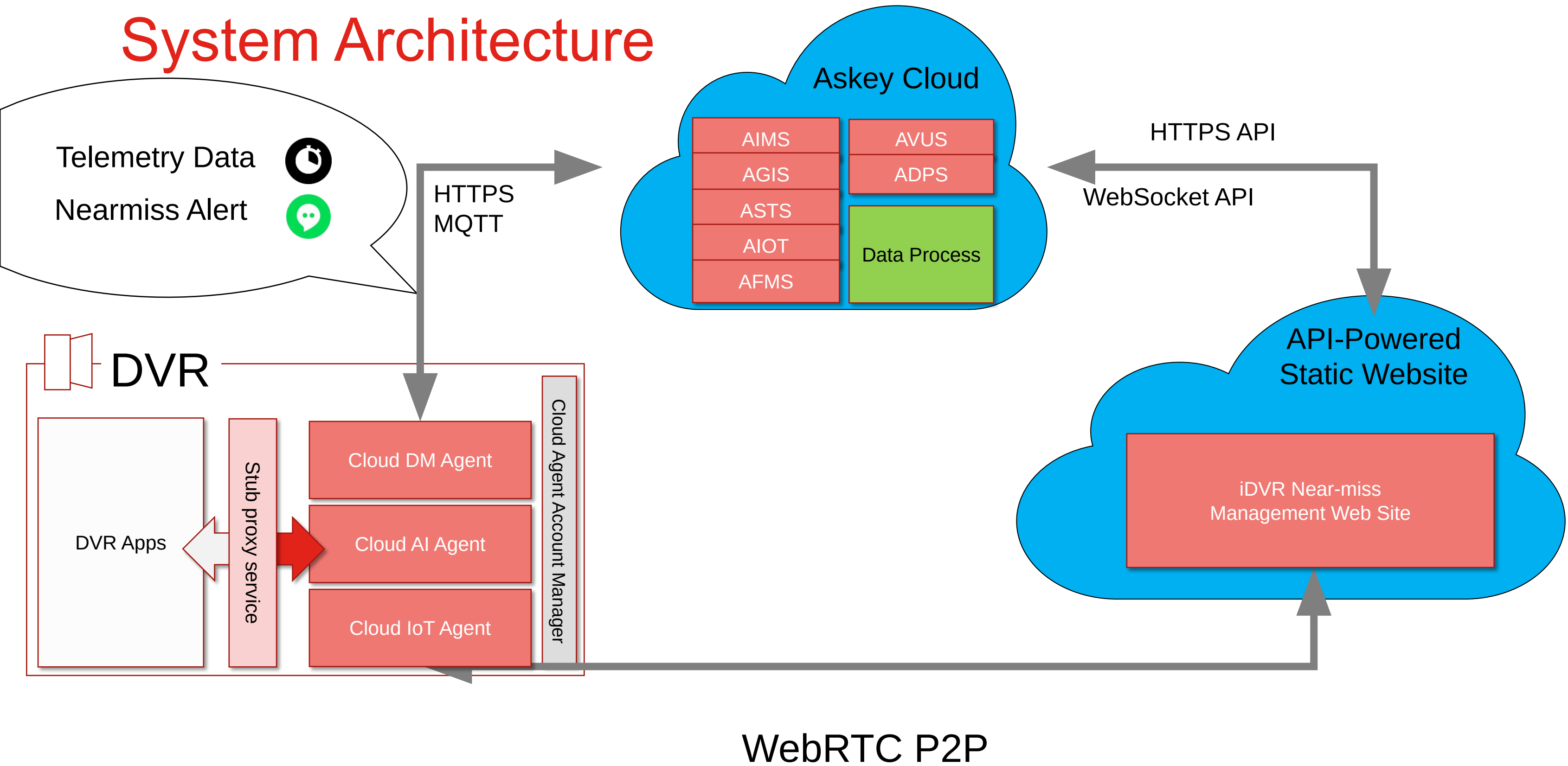


iDVR Suites / AI Extension

Capturing tags and machine learning training



System Architecture



Computex Azure Booth – Askey iDVR / AI





Manufacturing Experiences.
Since 1989.